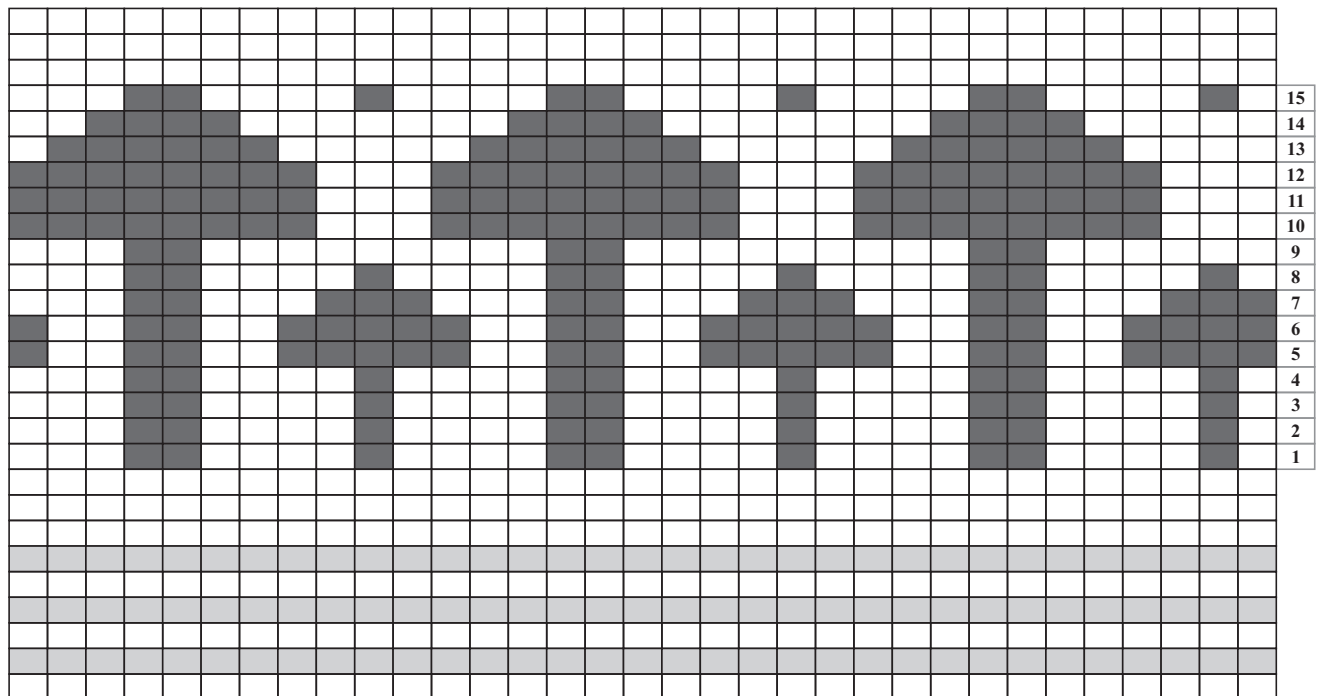


Mushroom colorwork hat

by Jill Soha



KNIT in COLOR A
 PURL in COLOR A
 KNIT in COLOR B

Sizes

Small (toddler), medium (child or small adult), large (adult)

Pattern repeat is 11 stitches, so on a gauge swatch or after several rounds of the hat, you can measure 11 st across and multiply that length by 7 (8, 9) to estimate the expected circumference. Photo shows me wearing the medium size. The large size is slightly loose on me but fits my husband well.

Supplies

Worsted weight yarn: 100 yds color A, 30 yds color B
 (75 yds A and 25 yds B are enough for toddler size)
 Size 6 DPNs or small circular needle, yarn needle

Instructions

Using color A, CO 77 (88, 99)
 Join to work in round

Base of hat

Starting with a knit round, work garter stitch for 4 (6, 6) rounds

Work 3 rounds of stockinette (knit rounds)

Work 15 rows of pattern using chart above, repeating motif as needed (dark squares = color B)

Continue with stockinette (knit) rounds in color A until base of hat is 5 (6, 6) inches high

Decrease rounds (in each round, repeat to end)

Round 1: knit 9, k2tog

Even numbered rounds 2 - 14: knit

Round 3: knit 8, k2tog

Round 5: knit 7, k2tog

Round 7: knit 6, k2tog

Round 9: knit 5, k2tog

Round 11: knit 4, k2tog

Round 13: knit 3, k2tog

Round 15: knit 2, k2tog

Round 16: knit 1, k2tog

Round 17: k2tog

Cut yarn with sufficient length to draw it through the remaining 7(8, 9) sts and pull tight. Weave in ends.



Small (toddler) size using 2 colors as described



Medium size using more colors